

We are thrilled to announce our upcoming **Open Studios** event which will take place on **Friday, September 12th, from 6-9 pm, and Saturday, September 13th, from 3-9 pm**. This event will showcase the work of 21 international artists who have joined us from July to September, including 13 onsite artists, 1 curatorial resident, and 7 online artists and who will be featured in our **(Virtual) Open Studios, beginning Friday, September 12th, at 6 pm, on our website**.

In our Project Space we will present the group exhibition *Spaces of Perception*, curated by our curatorial resident, Ashley Kraynak. The exhibition asks how exterior and interior states – imagined, isolated, or shared – shape our understanding of self, belonging and purpose. **The exhibition opens during Open Studios on September 12th and continues through September 20th.**

Artists

The artists' works span a wide array of themes and mediums. **Alejandra Prieto's** work centers on the chemical elements found in minerals and in our own bodies, in order to connect seemingly distant worlds. **Annette-Karin Richards** is a New Zealand artist and writer working across photography and drawn to environmental portraiture, expressionist abstraction, and landscapes. **Anton Vertwen's** work is filled with humor and the absurd, telling personal stories – of war and home, loneliness, overthinking, cruelty and beauty. **Ashley Kraynak** is a curator focused primarily on contemporary art and its position as an instrument for social change and conversation. **Birgit Moffatt** explores the intersection of culture, migration, and memory, which continually shape her sense of self and belonging. As an artist, **Carlos Bonet** is interested in investigating the relationship between power and pleasure in the capitalist context. **Christina Krah** paints varied interpretations and impressions of landscapes, aiming to capture their emotional and historical depth. **Daniela Federighi** is a visual artist whose work explores and experiments with material, sensory, and almost theatrical encounters in everyday life.

Haein Kim's practice perceives liminality as a liberation, contradicting the productivity and efficiency demanded in the capitalistic world. Through careful textures, monochrome palettes, and mixed media, **Hyeyeon Chung** invites viewers into a space to reconsider how we perceive landscapes, memories, and our connections to place and people. **Kandice Kardell's** work explores the interplay between death and desire, examining how societal suppression of grief and denial of mortality disconnect us from the natural world. **Megan Sharkey** is an artist whose work explores presence, memory, and the physicality of time.

Natasha Lubis' work explores internalized archetypes through feminine representation and iconography, interweaving historical narratives, popular culture, and psychological influences. In **Paula Garcia Sans'** artistic practice they explore the uncanny through digital tools and sculpture, using mediums like stone, wax, 3D software and game engines. **Pei Shan Lee's** work flows between dreamlike imagery, generative visuals, and sculpture, centered on the posthuman body, memory, and virtual boundaries. **Rieko Tsuji** researches and expresses gender issues through creating works using crafts and video. Through the dissection of personal experiences and images gathered from memories, dreams and daily life, **Rita Fernández'** work is a constant inquiry about the self and what constitutes identity. **Shuai Yang's** practice critiques the measurement-based épistémè that erodes subjectivity and authenticity. **Solmaz Khaleghpanah** combines traditional techniques like gouache, acrylic, oil, and mixed media, seeking to revive historical narratives and cultural memory. **Suyi Xu's** recent works unfold a series of gridded planes, opening a study on perspective in which shapes and forms emerge from hazy mists like afterimages.

Project Space

Our Project Space will host the group exhibition *Spaces of Perception*, curated by our curatorial resident Ashley Kraynak. The exhibition navigates the physical and metaphysical qualities of lived-in space.

Spaces are where we retreat, construct, and open up our personal worlds. Between self and space, or lack thereof, the internal and external meet. *Spaces of Perception* asks how these exterior and interior states – imagined, isolated, or shared – shape our understanding of self, belonging and purpose. Internal dialogues, shaped through formative memories, are navigated through rituals and expressed through habits, unique to each soul's essence.

Participating Artists

Jonathan Esperester <https://www.jonathanesperester.de/>

Suzanne Levesque <https://suzanne-levesque.com/>

Giulia Gr <https://giuliagr.myportfolio.com/>

gwen charles <https://www.gwencharles.com/>

Arbnor Karaliti [@arbnorkaraliti](https://www.arbnorkaraliti.com/)

Philil Crawford <https://philipac.com>

Ashley Kraynak is part of GlogauAIR's recently established curatorial residency program. Curatorial residents have the opportunity to meet and engage with the artists and curators in our program, as well as develop their own projects.

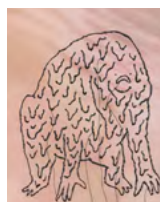
Press Release
 Open Studios December 2024
 Glogauer Str. 16 10999 Berlin
 +49 (0) 30 61 222 75
 info@glogauair.net



Alejandra Prieto
 (Chile)



Annette Karin Richards
 (New Zealand)



Anton Vertwen
 (Ukraine)



Birgit Moffatt
 (Germany)



Carlos Bonet
 (Spain)



Christina Krah
 (Germany and Spain)



Daniela Federighi
 (Brazil)



Haein Kim
 (South Korea)



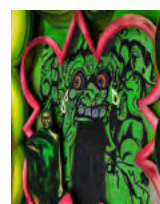
Hyeyeon Chung
 (South Korea)



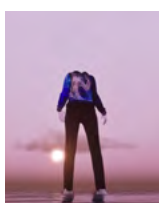
Kandice Kardell
 (United States)



Megan Sharkey
 (United Kingdom)



Natasha Lubis
 (Indonesia)



Paula Garcia Sans
 (Spain)



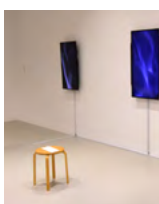
Pei Shan Lee
 (Taiwan)



Rieko Tsuji
 (Japan)



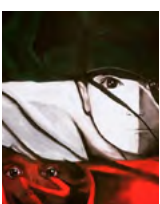
Rita Fernández
 (Mexico)



Samantha Lee
 (Malaysia)



Shuai Yang
 (China)



Solmaz Khaleghpanah
 (Iran)



Suyi Xu
 (China)

The Catalogue's Cover

Every three months, GlogauAIR releases a new catalogue, collecting the work and projects of the artists in residence. The catalogue in your hands not only showcases this term's creations but also constitutes a reflection of this past term's experiences.

Our first catalogue edition was released in 2006, and it has changed a lot since then. Since 2021, the catalogue cover is now decided by an open call to all of the participating artists. Making this publication a canvas in which our artists in residence can intervene results in a more personal publication every residency term. Participating in the cover of the catalogue also encourages the artists to translate their work into a different medium.

After carefully reviewing the proposals for this session, the jury selected the image submitted by Natasha Lubis, an Indonesian painter who lives between Bali and Jakarta. Lubis' practice blends digital and traditional painting techniques to create theatrical, dream-like scenes.

In her multi-layered mixed-media work, *Primeval Playground (2024)*, intense shades of green and pink assault our senses as our eyes are drawn inward towards a gaping monstrous mouth. Inspired by the mystical Goa Gajah (Elephant Cave) in Ubud Bali, which dates back to the 9th century, Lubis carefully intertwines the modern and the traditional, challenging and playing with our preconceptions of Indonesian art.

GlogauAIR's residency is a place for artists to fully concentrate on their artwork; exploring, experimenting and exhibiting. During Lubis' three-month residency, she was able to dive deeper into her concept and explore new techniques with the support of our curatorial team, culminating in our open studios event with all of the resident artists.



**For more information about the event or any
of our resident artists please contact us at**

info@glogauair.net

About GlogauAIR

Chema Alvargonzalez was the founder of GlogauAIR (Jerez de la Frontera, 1960 - Berlin, 2009). In Berlin, he experienced the fall of the Wall and was part of Künstlerinitiative Tacheles. Furthermore, he introduced many incoming artists to the city and its artistic scene. This was formalized when he founded GlogauAIR in 2006 in the same building that is still hosting the residency today.

GlogauAIR was created as a meeting point between artists from all disciplines and it is based on the principles of exploring, creating and exhibiting. The residency offers 13 studios to international artists who during their stay participate in the residency program, which offers curatorial support and the possibility to take part in diverse activities aimed to help them in their professional careers.

Every three months, at the end of the residency program, GlogauAIR opens its doors to the public. For the **Open Studios Exhibition** artists transform their studios into an exhibition space. Furthermore, since we established our on-line residency program, the Open Studios exhibition has also been expanded to a virtual edition, which is hosted on our website. Sharing the Open Studios event, the Project Space hosts an exhibition from either an invited artist from Berlin -Berlin Guest Resident- or a collaboration with institutions, adding value to GlogauAIR's project by providing exchange and dialogue.

