



We are thrilled to announce our upcoming **Open Studios** event which will take place on **Friday, June 13th, from 6-9 pm, and Saturday, June 14th, from 3-9 pm**. This event will showcase the work of 15 international artists who have joined us from April to June, including 12 onsite artists and 3 online artists who will be featured in our **(Virtual) Open Studios, beginning Friday, June 13th, at 6 pm, on our website**.

In our Project Space we will present the two-person exhibition **Fold of Time**, featuring GlogauAIR's founder Chema Alvargonzalez and the Norwegian artist Einor Grinde and curated by Mercedes Cerón, director of Galeria Nave in Lisbon, Portugal. **The exhibition opens during Open Studios, June 13th and 14th and continues through June 21.**

Artists

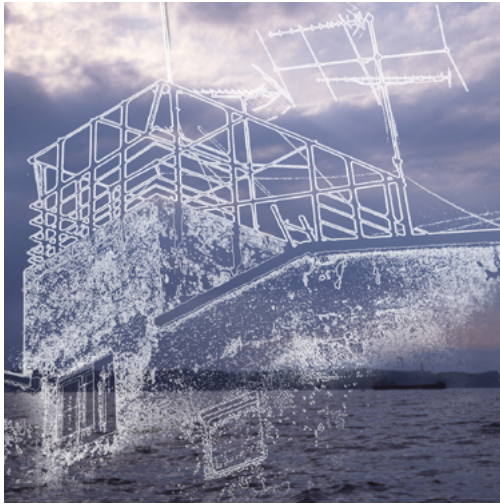
The artists' works span a wide array of themes and mediums. **Alex See's** work addresses questions about the nature of the image in a post-digital reality, using digitally manipulated photography or found imagery. **Arte Delharte's** work encompasses an undisciplined, appropriationist, and Conceptual practice. **Alyazia Al Nahyan** is a visual artist whose practice explores landscapes as repositories for memory and material culture. **Cheng Yu Lin's** artistic practice centers on the subtle yet complex relationship between the contemporary human body and technology-driven life. **Clara Silveira's** work explores the tension between fiction and reality, memory, trauma and identity. **Dakota Guo** is a Rotterdam-based interdisciplinary artist working across performance, video, installation, text, and sculpture.

Eva Busch Verni's work fluctuates between time-based media, sculpture, drawing, photography, and writing, always with a focus on sensory and sensitive experience. **Hedvig Greiffenberg** is a Danish artist working mainly within the field of sculpture and installation. **Hsin Yen Wang** specialises in 3D technology and video. Her work explores themes of politics, social and cultural structures, and the cycle of consumption embedded in images. **Jessica Ledwich** is an Australian photographic and installation artist whose practice explores the intersections of consumer culture, eroticism, and contemporary ideals. **Kathleen Thum's** large-scale cut-paper artworks explore the vastness of the petroleum infrastructure, evoking the physical and emotional experience of the petroleum landscape.

The work of artist educator **LiLi 丽丽 Nacht** is rooted in meditation, ritual, Daoist/Buddhist practice, and 山水 (mountain water) ink landscape painting traditions. **Martin Winkler** is a visual artist whose work explores queerness, history, and pop culture through painting and installation. Through drawing and sculpture, **Moksha Richards** interconnects concepts from theoretical physics, spirituality, mathematics, technology, history, and cosmism. **Ollie Kendrick** is a multi-disciplinary artist from the UK who uses still and moving images to explore the image spaces around the concept of boredom.

Project Space

Our Project Space will host the duo exhibition, Fold of Time, curated by Mercedes Cerón of Nave Gallery, on view from June 13th through June 21. The exhibition brings together two artists, GlogauAIR’s founder, the Spanish artist Chema Alvargonzalez and the young Norwegian artist Einor Grinde. Remarkably, these two artists, from such different geographies and cultures—even differing life circumstances— find common ground in their unease. Although their methods of materialization are deeply personal and inimitable—Chema Alvargonzalez with his works of light and image layering, and Einar Grinde with his replication of black as a delicate skin of emptiness that also materializes in abundance— both artists grapple with and express a society that insists on being a “nothingness.” Supported by Memoria Artística Chema Alvargonzalez



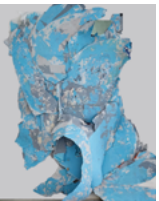
CHEMA ALVARGONZALEZ, EL AFUERA COMO PLIEGUE DEL TIEMPO (2005)
DIGITAL PHOTOGRAPHY, 55 X 160 CM



Alex See
(Russia)



Alyazia Al Nahyan
(United Arab Emirates)



Arta Delharte
(Spain)



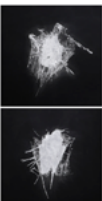
Cheng Yu Lin
(Taiwan)



Clara Silveira
(Brazil)



Dakota Guo
(China)



Eva Busch Verni
(Chile)



Hedvig Greiffenberg
(Denmark)



Hsin Yen Wang
(Taiwan)



Jessica Ledwich
(Australia)



Kathleen Thum
(United States of America)



LiLi 丽丽 Nacht
(USA and China)



Martin Winkler
(Germany)



Moksha Richards
(Australia)



Ollie Kendrick
(United Kingdom)

The Catalogue's Cover

Every three months, GlogauAIR releases a new catalogue, collecting the work and projects of the artists in residence. The catalogue in your hands not only showcases this term's creations but also constitutes a reflection of this past term's experiences.

Our first catalogue edition was released in 2006, and it has changed a lot since then. Since 2021, the catalogue cover is now decided by an open call to all of the participating artists. Making this publication a canvas in which our artists in residence can intervene, results in a more personal publication for every residency term. Participating in the cover of the catalogue also allows the artists to translate their work into a different medium.

After carefully reviewing the proposals for this session, the jury selected the image submitted by Jessica Ledwich, a photographer and installation artist who lives and works in Australia. Ledwich's artistic practice lies at the intersection of consumer culture, eroticism, and contemporary ideals, resulting in work which is humorous, yet, thought-provoking.

Ledwich's photograph, *Bunny* (2025), features a small, kitschy, rabbit statue reminiscent of a Jeff Koons sculpture. Seemingly bursting from the image's frame, the rabbit carries a reduced price tag due to a chipped ear. With soft-pastel colors Ledwich elevates the tacky bunny from broken trinket to a sexy, sensual 'Instagrammable' object. Ledwich's interest in this subject lies in the throwaway consumer culture we can't seem to escape. Like many artists coming to Berlin for their residency, she dove into the city's numerous flea markets, junk stores and One-Euro-shops, finding a treasure trove of material for her projects.

GlogauAIR's residency is a place for artists to fully concentrate on their artwork; exploring, experimenting and exhibiting. During Ledwich's three-month residency, she was able to dive deeper into her concept and explore new techniques with the support of our curatorial team, culminating in our Open Studios event with all of the resident artists.



For more information about the event or any
of our resident artists please contact us at

info@glogauair.net

About GlogauAIR

Chema Alvargonzalez was the founder of GlogauAIR (Jerez de la Frontera, 1960 - Berlin, 2009). In Berlin, he experienced the fall of the Wall and was part of Künstlerinitiative Tacheles. Furthermore, he introduced many incoming artists to the city and its artistic scene. This was formalized when he founded GlogauAIR in 2006 in the same building that is still hosting the residency today.

GlogauAIR was created as a meeting point between artists from all disciplines and it is based on the principles of exploring, creating and exhibiting. The residency offers 13 studios to international artists who during their stay participate in the residency program, which offers curatorial support and the possibility to take part in diverse activities aimed to help them in their professional careers.

Every three months, at the end of the residency program, GlogauAIR opens its doors to the public. For the **Open Studios Exhibition** artists transform their studios into an exhibition space. Furthermore, since we established our on-line residency program, the Open Studios exhibition has also been expanded to a virtual edition, which is hosted on our website. Sharing the Open Studios event, the Project Space hosts an exhibition from either an invited artist from Berlin -Berlin Guest Resident- or a collaboration with institutions, adding value to GlogauAIR's project by providing exchange and dialogue.

