

JANUARY - MARCH 2024



GLOGAU AIR

ARTISTS IN RESIDENCE / BERLIN

INDEX

THE JOURNEY	4
GLOGAUAIR	6
OPEN STUDIOS	10
ARTISTS	12
PROJECT SPACE	62
ABOUT THE COVER	66

THE JOURNEY

NOTES ABOUT CHEMA ALVARGONZALEZ

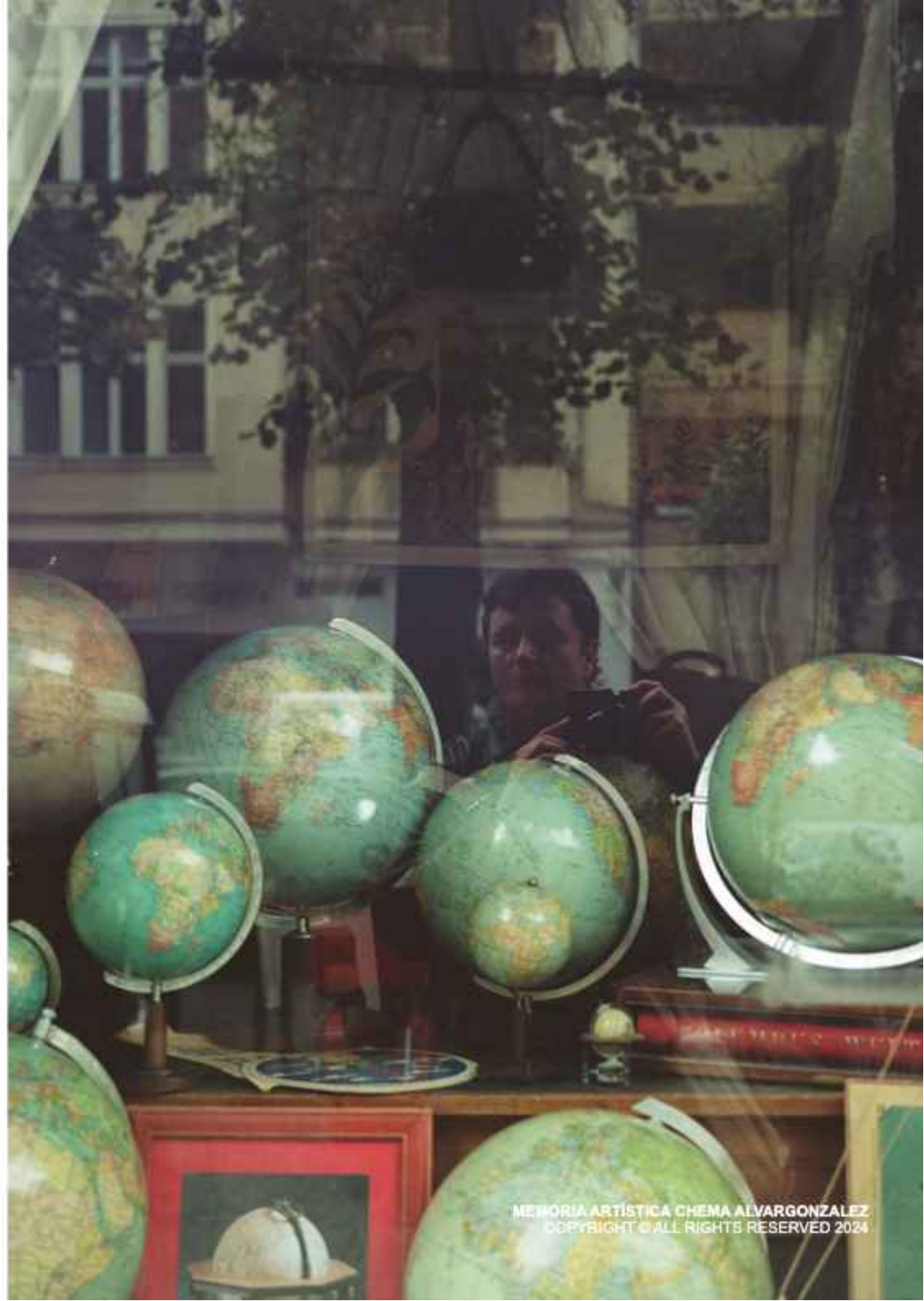
The journey is a constant process of disconnection and reconnection. Along the route, Chema Alvargonzalez saw himself as an itinerant figure and it is during this experience of "spinning around the world" that Alvargonzalez establishes points for connection with his surroundings.

As part of this journey, Chema Alvargonzalez (b. Jerez de la Frontera, 1960 - Berlin, 2009) founded GlogauAIR, in 2006. After studying Fine Arts in Barcelona, Alvargonzalez continued his studies in HdK (UdK Berlin) under the direction of Rebecca Horn, where he obtained a Master of Fine Arts and Multimedia. From that point on he worked and lived between Barcelona and Berlin.

Alvargonzalez experienced the exciting events surrounding the Fall of the Berlin Wall in 1989 and the period that followed it. During that time, he was part of the Künstlerinitiative Tacheles and dedicated much of his time **introducing incoming artists to the city of Berlin and its art scene**, something that was formalized when he conceptualized GlogauAIR.

Alvargonzalez was a representative of the generation of artists whose artwork was highly influenced by **globalization and technology**. As a consequence, Chema's artwork, as well as GlogauAIR, were conceived as transcending geographical boundaries.

After Alvargonzalez's early death, his siblings Pablo and Columna took over Chema's heritage, founding Memoria Artística Chema Alvargonzalez in order to preserve Chema's artwork as well as taking over the direction of GlogauAIR.



GLOGAUAIR

THE SPACE AND THE PROGRAM

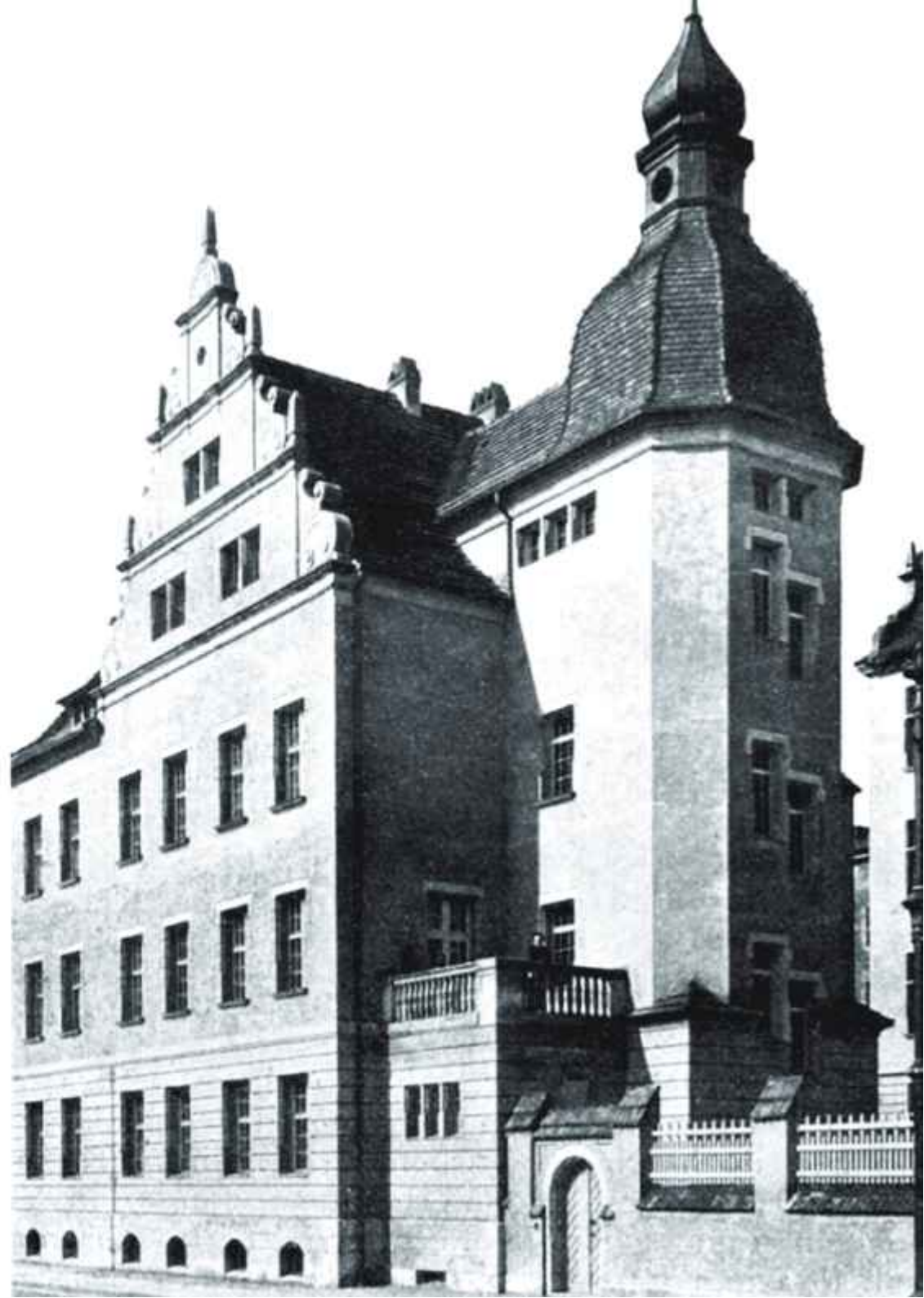
Today GlogauAIR is a non-profit art space and residency, located in a beautiful, historicist-style building that was originally designed to be a school. The building was one of the first projects erected by the architect Ludwig Hoffmann in 1896, during his time as the Building Advisor of Berlin.

Focused on the principles of **exploring, creating, and exhibiting**, the residency offers an on-site and on-line program for international artists from all fields.

Artists in GlogauAIR's **on-site Residency Program** live and work in one of thirteen studios. They receive curatorial and technical support, as well as a diverse program that aims to help them in their professional careers; encouraging not only the development of the artist's work but also the opportunity to share ideas and opinions with the other artists living in the building.

Through the **on-line Program**, the artist has the opportunity to receive curatorial support, regular group meetings, talks by experts, and workshops, from their homes or personal studios, located anywhere in the world. The on-line program was set up as a result of the challenges we faced in 2020. Far from letting this stop us, we expanded our program to make it available for artists who can't join us physically in Berlin, and have continued the on-line program, as we realized it provides an important and useful tool for those who are unable to travel to Berlin.

Above all, GlogauAIR continues the project created by Alvarogonzalez, built on openness, receptivity to new ideas, and support of local and international contemporary art practices.





OPEN STUDIOS

WINTER 2024

GlogauAIR's Open Studios invites the public to witness the result of three months of intensive research and production by the artists taking part in GlogauAIR's residency program on-site in Berlin and on-line throughout the world. These artists join GlogauAIR to dedicate themselves to the creation of new work and to explore new processes together with an international cohort of artists.

Every resident develops their own project, but embedded in this international community of artists, we observe how the exchange of ideas and common explorations converge together. For many of the resident artists, this period has been an opportunity to take an inward turn to understand the self as a part of a whole and our place in the world at large. Through performance, video, self-portraiture or textual inquiry, artists engaging in this challenging work inhabit the gap between the personal and the universal; a liminal space where questions and answers coexist. The online program explores the interplay between online and offline worlds as we embrace the dynamic language of new technologies.

The Project Space on the ground floor of GlogauAIR presents the work of Miriam Poletti, the Berlin-based artist selected by La Memoria Chema Alvangonzalez to exhibit at GlogauAIR in March 2024. The artist invited the current resident artists to participate in a creative exchange during the development of the site-specific work. Poletti's collective approach to artmaking explores ways of creating connection, extending her artistic inquiry beyond the objects into the people that surround us, creating links between her installation, creative practice and the idea of a social fabric.

Open Studios is the culmination of a program of activities in different formats such as curatorial visits, tours within the city of Berlin, talks and workshops that have provided resources, inspiration, and understanding to enhance the artist's work and create a platform for their career. This time and as always, GlogauAIR keeps finding opportunities to develop, exchange and invite conversation on contemporary art and multidisciplinary culture.



ARTISTS



ANJI LESOURNE (FR, JM)	14
BAKERBREW (USA)	16
BIANCA DURRANT (AU)	18
CAMILLA MARINONI (IT)	20
CASSANDRA PAIGE (CA)	22
CYNTHIA CHOU (CA, TW)	24
DAE (USA)	26
ELISA PARDO PUCH (ES)	28
GETSAY (USA)	30
HILDUR HENRÝSDÓTTIR (IS)	32
HU ZE QIAN (CN)	34
JACQUELINE HUSKISSON (CA)	36
JOÃO MOTTA GUEDES (PT)	38
LUCÍA MIR (ES)	40
NATASHA KATEDRALIS (CA)	42
NATHALIE MEI (ES)	44
NICHOLAS FERGUSON (UK, CH)	46
NINA CRISWELL (USA, LT)	48
SHANNON CASTOR & DUAA BILBEISI (JO, USA)	50
SHAYE THIEL (USA, CA)	52
STELLA WIEMANN (DE)	54
TIFFANY ADLER (USA)	56
WORKING HARD (TW)	58
YULIA ANI (DE)	60

ANJI LESOURNE

FRANCE, JAMAICA

www.anjilesourne.com



Anji Lesourne is a painter and sculptor with roots tracing back to the landscapes of Jamaica, who studied at Lawrence University in the USA and now resides in France.

She draws her main references from a variety of international painters for their construction of an imaginary through both figurative language and abstract expression.

Lesourne represents human figures and portraits of a symbolic figure that allows her to delve deep into the intricacies of emotion and expression, challenging the viewer's perception and inviting the viewer's introspection.

During her residency in the GlogauAIR Online Program, she experimented with the language of abstractions freeing her brushstrokes, incorporating new bolder colours.

Lesourne is incorporating her practice references from classical masters and painting to review the representation of the human form specially in western arts and culture.

The artist brings a diversity of perspective and ways of representation to present and often asks the question *"How do I reconcile the timeless beauty of classical painting with the boundless possibilities of modern interpretations? Can I find common ground between the past and the present, forging new connections?"*



BAKERBREW

UNITED STATES OF AMERICA

www.b4ker.com | www.ellabrew.com



ONLINE

BAKERBREW is a collaborative project between Maddie Baker and Ella Brew, situated at the intersection of sculpture and design. Their place-based practice of observation, collection, and transposition is defined by shared interests in structural and visual systems around them.

Through the practice of walking, material emerges. Forms of functional city elements are found and cataloged, and a collection of street scavenged informational material (manuals, old textbooks, torn flyers ...) serves as a corruptible image supply. Consequent material alteration, intervention and recontextualization allows these disparate sources to merge: utility-inspired ceramic forms are hybridized with transparent layers of vellum, resin, and various manipulated found images. The use of light as additional material adds a glowing center to the work. The process is an intimate exchange—not impersonal, and not rational.

BAKERBREW quickly blurs between decay and preservation, logic and confusion, and machine and creature. Through both material and hand, ephemeral layers of time and memory are woven into a single surface—illuminating multi-layered records of fading imprints, and engaging in the creation of a strange new system.



BIANCA DURRANT

AUSTRALIA

www.biancadurrant.com



Bianca Durrant is a conceptual artist whose installation-based practice has been evolving since her training in fine arts, culminating in a Master of Fine Arts degree. Since 2001, she has been also contributing to the art world through cultural management and curatorial endeavours, showcasing the works of both Australian and international artists.

Durrant's exhibitions serve as a form of institutional critique, prompting audiences to reevaluate their perceptions of cultural artifacts, ownership and institutional authority. Through her practice, she has undertaken residencies and creative projects that involve accessing natural history museum collections, constructing full-scale mock museums and archived collections, and creating large-scale wall drawings that challenge established theories and data sources. Her exploration of the politics of display extends to interrogate the artistic process, labour dynamics, the efficacy of display methods, and how audiences interact with the artistic output.

During her residency at GlogauAIR, Durrant developed her upcoming project, "The Collection" which merges her dual roles as both artist and curator, to explore how text and narrative operate within museological frameworks. Through "The Collection," Durrant aims to push the boundaries of traditional exhibition formats and challenge conventional notions of curation and presentation while examining the complex interplay between artist labour, institutional structures, and the art market.

**ARTIST WORK
OBJECT COLLECTION
ART MARKET
FUND ART
CURATOR ART
ORGANISE PRESENT
CURATING PROCESS
LABOUR ARTIST
CURATOR CHALLENGE
ARTIST ART
CULTURAL SOCIAL**

CAMILLA MARINONI

ITALY

www.camillamarinoni.com



STUDIO 11

Camilla Marinoni is an Italian visual artist. She holds a BA in Sculpture and an MA in Contemporary Sacred Art from the Brera Academy of Fine Arts in Milan. During an advanced course in sculpture, led by the artist Arnaldo Pomodoro, she engaged in discussions with the artist and artistic director Nunzio, focusing on the body as an expressive medium to initiate a dialogue between sculptures and installations. The body, wounded, looked after and eviscerated, immersed between the finitude and the expected, is the starting point and topic that emerges in her artistic practice.

The artworks created with ceramic and textile during her three-month residency are part of her latest research, inspired texts by the philosopher Jean-Luc Nancy and Telmo Pievani - a philosopher of biology and an expert on the theory of evolution. The body is the place of existence, but how do we find meaning in it while accepting our finitude? Our body inhabits the world and is in continuous relationship with it: it reacts to the stimuli that comes from it and - like a writing surface - retains traces of the interaction, indelible scars, signs that make it a living memory. Marinoni's work delves into this intimate realm, exploring the body up close, revealing its crevices and deep viscera. A gaze that seeks to transcend the enigma of the body's impenetrability, the unknowable aspects of nature, the mysteries that surround us, embarking on a quest to uncover traces of life.



CASSANDRA PAIGE

CANADA

www.cassandrapaigefilms.com



Cassandra Paige is a multidisciplinary artist based out of Edmonton, Alberta, Canada. She attended four years post-secondary school in theatre and film, and has gone on to produce and direct a number of short films and music videos. Her experimental film 'Fish Bone' was screened at the Edmonton International Film Fest, Cinema Spectacular as well as other festivals.

Paige's practice includes collage, writing, filmmaking and acting. The collage series 'Splitting' was created during her time at Artscape Gibraltar Point Artist Residency with the Feminist Art Collective of Toronto in summer 2023. It went on to be exhibited at Vertigo Theatre in Calgary, and in the winter issue of Room Magazine based out of Toronto.

Currently, she is in pre-production on 'Secret Time' a short film in collaboration with filmmaker Ryan Leedu, the second film produced between the pair. Their first film, 'No Bedroom', screened in April 2023 at the Canadian Film Fest where Paige won breakout performance for her role in the film.

While at GlogauAIR, Paige has been experimenting with digital and analog film to create a film installation piece. Instead of using linear stories and traditional filmmaking structures, she is attempting to translate a feeling of unease through altered images and sound.

Her work explores the cycles of life and its impermanence, the daily intimacies we have with each other, and the lifelong relationship we have with ourselves.



CYNTHIA CHOU

CANADA, TAIWAN

www.cynthiachou.work

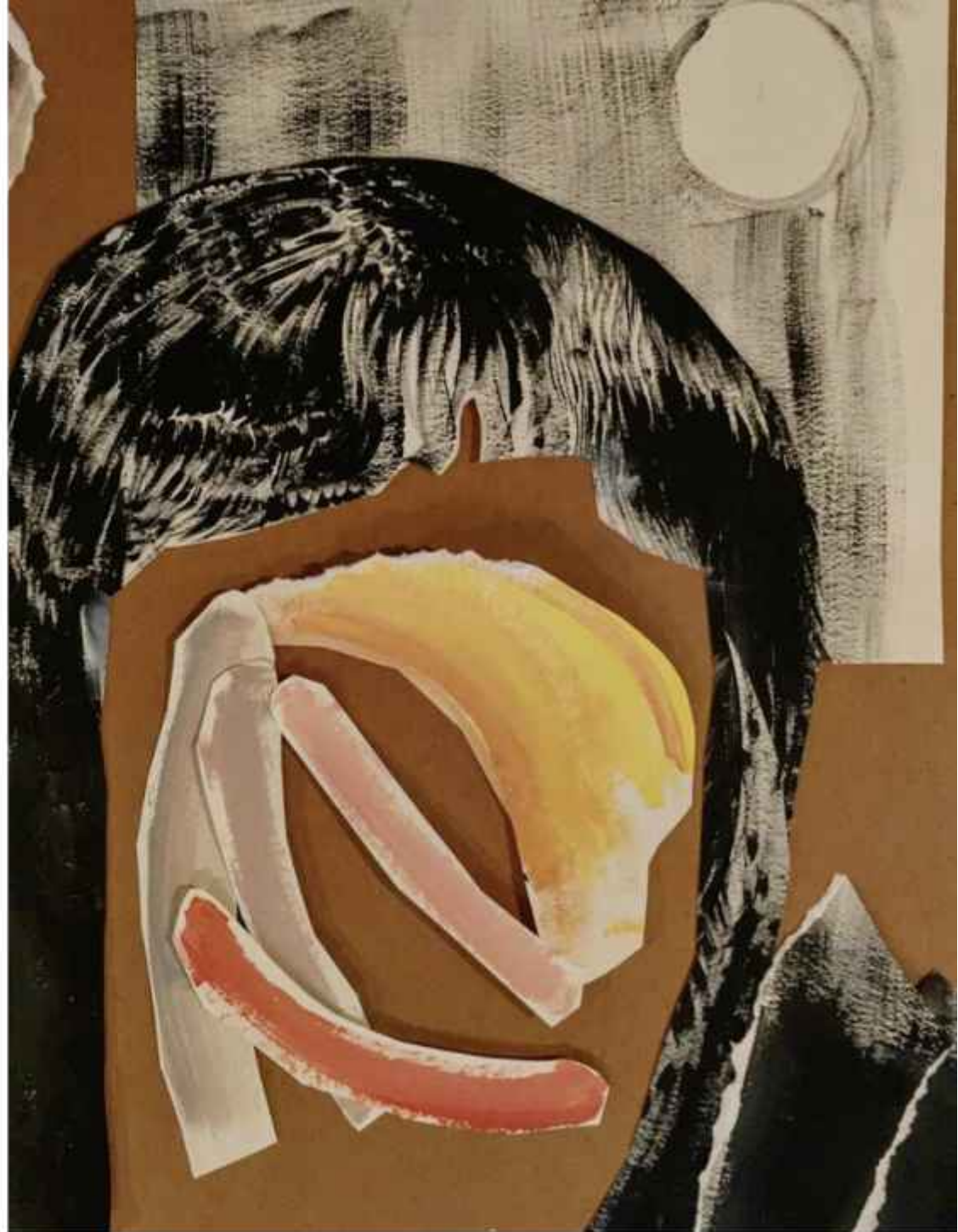


Cynthia Chou is a Taiwan-born and Canada-raised artist currently living in Berlin, exploring the nature of the self-image in relation to memory, permanence, and decay. Her work is rooted in abstract and expressive portraiture, and investigates the themes of personal documentation and the preservation of identity.

Throughout her residency at GlogauAIR, Chou questions how self portraits reflect the way we perceive ourselves, and which aspects of our identity we choose to be remembered by. Combining references to automatism and the use of drawing to express the subconscious, her work looks into our innate desire to maintain and preserve parts of the subjective self through journaling, repeated mark-making, and collage.

Inspired by her background across science and design, Chou's practice draws from a diverse spectrum of mediums and methodologies. She uses both biodegradable and permanent materials to capture the essence of transformation and impermanence that is inherent in the human experience.

Her current work is focused on the development of new formats and processes that will integrate biomaterials into her practice, and allow a rich synthesis of both visual and tactile elements in her pieces.



DAE

UNITED STATES OF AMERICA

www.daenightstudio.com



As a queer, Cuban American sociologist, multisensory artist, and healer based in New York City, Dae's creative journey delves into the depths of self-discovery within both the individual and collective realms. With a profound emphasis on generational healing and the profound connection with the body and mind, Dae's inspiration springs from a diverse philosophical tapestries. Dae's spiritual bases weave together strands of Tibetan Buddhism, Taoism, insights from neuroscience and their training in classical dance.

In Dae's artistic practice, they approach each endeavor with a ritual. They meticulously set the scene, clearing the physical space, body and mind to engage in meditation. This ritual creates a receptive channel for art to flow through. Dae believes in the transformative power of slowing down and honoring the present moment as the purest act of creation. Their artistic expression spans a multitude of mediums, ranging from captivating performances to interactive installations, photography, videography, and textile works. At the core of their work lies an intention: inspire transformations within the audience's inner landscapes, thereby catalyzing shifts in the external world.

Through their art, Dae endeavors to kindle a sense of empowerment within themselves and others. Their work invites individuals to embark on their own journey of self-discovery and become agents of positive impactful change in their surroundings. By fostering a deeper connection with themselves and the world around them, Dae's work serves as a catalyst for personal growth and collective evolution, offering a beacon of hope and inspiration in an ever-changing world. For Dae, art is more than an expression; it's an opportunity to understand the intricate relationship between the mind, body, and spirit in this world.



ELISA PARDO PUCH

SPAIN

www.elisapardopuch.com



STUDIO 24

Elisa Pardo Puch creates installations combining drawing, text and sculpture, transforming the space, to propose new narratives with which the spectator can create a connection.

Her work deals with themes such as transformation, the unconscious, desire, memory and the construction of narratives. Elisa Pardo Puch does this by linking autobiographical elements, experiences and emotions, with general issues or external experiences, generating in turn narratives through which to connect with the other. The artist is interested in small stories, intimate accounts that are not contained in the big story-telling of history, experiences that happen to us and that we feel individually but when exposed allow us to draw connections, to liberate and understand parts of ourselves and of others.

Pardo Puch works with techniques that allow her to proceed in an intuitive, repetitive and meticulous manner - such as drawing or sewing. Thus, Pardo Puch seeks and extends these moments of repetition and insistence, which often occur with the use of geometry. The grid, the careful line, the measured and exact perspective are common in her work. In these physical processes, in the trance of her own making, Pardo Puch finds a self-absorbed distance where ideas emerge, conceiving the process itself as a form of channelling.



GETSAY

UNITED STATES OF AMERICA

www.getsay.net

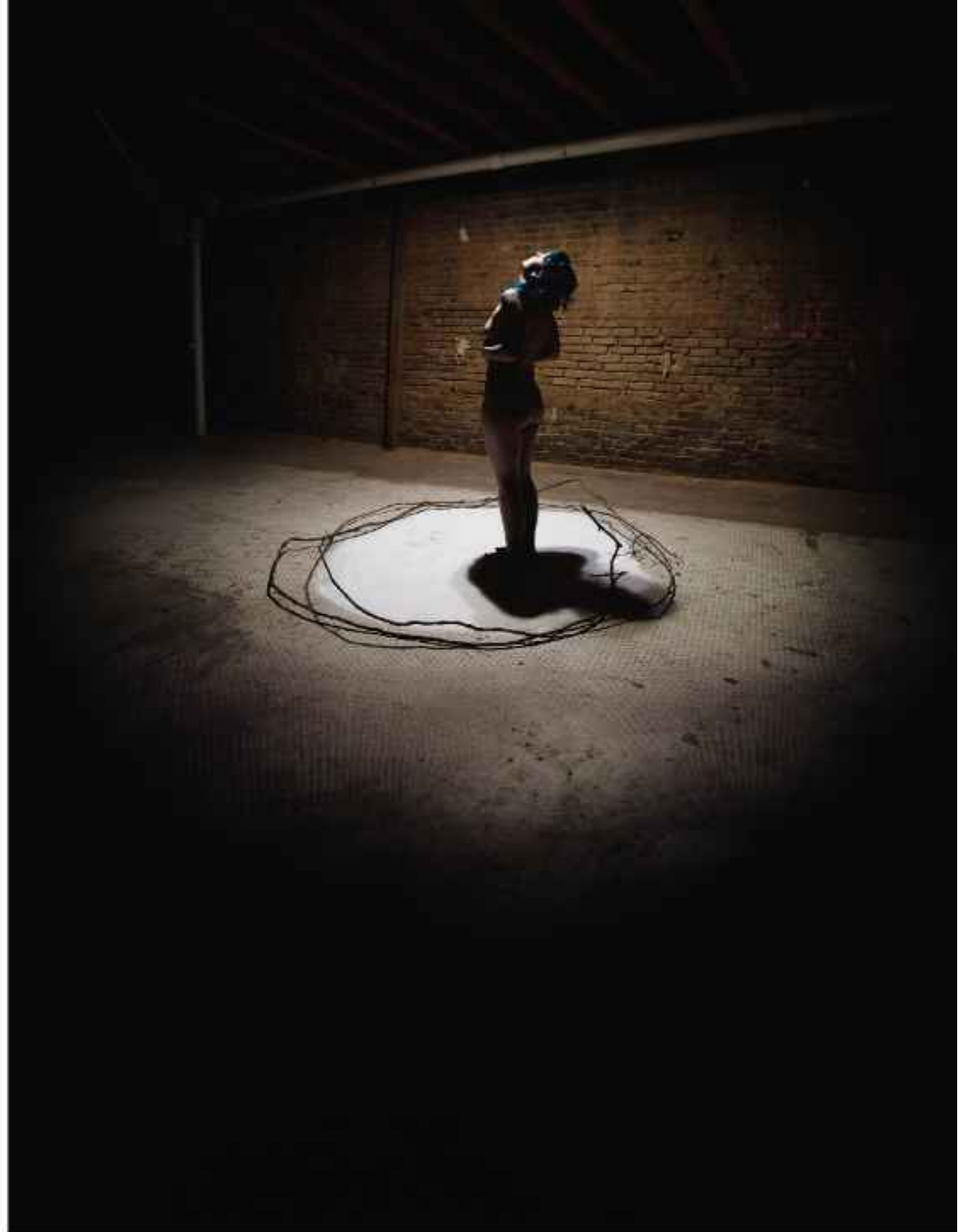


ONLINE

Getsay is a US-born American international conceptual artist and curator living in Berlin. As a Nonbinary / Queer artist and activist, their artistic endeavors serve as an exploration of that which confronts the very essence of human understanding. With a focus on the intricate dynamics of body, identity, and reality, their work encompasses a range of mediums including performance, installation, sculpture, and image.

At the core of their process lies a deep-seated connection to personal experience, the cultivation of ideas, and rigorous research. Through an intentionally relatable and deeply textual lens, they undertake a journey of self-discovery, inviting viewers to accompany them on a thought-provoking exploration of the human condition. Their artistic oeuvre challenges the conventional norms that often confine individuals, thereby sparking conversations about the fluidity and expansiveness of identity.

Currently, they are investigating the realm of the unconscious, and the numinous or "holy" spaces, within communities, religious contexts, and art forms. By exploring the intersection of the divine and nonconformity, they seek to understand how different cultures and practices interpret the numinous. Their work seeks to represent/showcase/highlight/share connection, empathy, and an evolved perspective on the interplay between personal experience, perception, and the fabric of reality itself.



HILDUR HENRÝSDÓTTIR



ICELAND

www.hildurhenrys.com

Hildur Henrýsdóttir grew up in Þórshöfn in the Langanes peninsula in northeast Iceland. In 2012, she obtained a BA in Modern Studies from the University of Akureyri. She graduated from the Fine Art department of the Iceland Academy of the Arts in 2016. Henrýsdóttir lives and works between Berlin and Reykjavík. She uses different media in her art to give life to her ideas; watercolours, oil on canvas, soft sculptures and sometimes video and photography are part of her process of creation.

Henrýsdóttir's works are personal, as she uses her own narrative and body, obscuring the frontier between fictional and autobiographical elements. By putting herself in the foreground in the artworks, she simultaneously provokes and suppresses the male gaze that tries to mould and regulate the female body. Her work depicts intimate moments free of taboos, embracing imperfection and blurring the line between what is meant to remain personal and what is socially acceptable to reveal in public. In most of her works, Henrýsdóttir portrays herself, exploring nudity and vulnerability, while undertaking an introspective journey into the relationship between her inner self, her own body, and others.

During her residency at GlogauAIR, Henrýsdóttir returns to oil painting after focusing on sculpture for the last two years. She continues to draw inspiration from her own life events, as well as her vivid dreams.



HU ZE QIAN

CHINA

www.huzeqian.com



STUDIO 31

Hu Zeqian is a Chinese artist living and working in Washington D.C, who works with acrylic and oil painting, digital painting and cyanotype. Seeking inspiration from museum collections, magazines, and vintage photographs, which he collects as references from the internet. He uniquely reproduces the digital images he finds and transforms them into white patterns. By using a simple brush technique, he layers them on canvas in such a way that his paintings visually exist somewhere between digital art and actual painting.

Zeqian hardly does any initial drawing on paper. All his sketches are done on the computer. In his creative process, selecting the appropriate images for recombination and colour matching takes up most of the time, and this process is also the process of refining the sketch. After completing the sketch, it is transferred and replicated onto the canvas using a brush.

Zeqian's patterns resembling plant silhouettes combine elements of Chinese Dunhuang cave murals, along with patterns from illuminated manuscripts of the mediaeval West, processed through the artist's mind, to create the final result. The artist deliberately blurs the inherent definitions of objects while highlighting the uniqueness of each piece. This allows viewers to directly perceive the background details through the cut-out patterns. The artist employs printmaking and collage techniques, making it hard to determine whether these works are abstract or representational.



JACQUELINE HUSKISSON



STUDIO 15

CANADA

www.jacquelinehuskisson.com

Jacqueline Huskisson is an interdisciplinary artist from Calgary, also known as Mòhkinstiss, in the treaty 7 region of Southern Alberta, Canada. In 2011 she received a BFA in Print Media from the Alberta College of Art and Design. In 2017 she received an MFA from the Belfast school of Art, N. Ireland.

A behemoth of a woman and destructor of narratives both linear and abstract, Jacqueline Huskisson's artistic practice encompasses everything that makes us uneasy. Her art searches for one's place in our metaphysical realm while examining historical and societal relationships to the natural world using the human body as context and narrative.

Huskisson resides in a body broken and bruised, seeking salvation in the stories of youth, nostalgia, and witchery. A breach of unrecognised folklore is spewing forth from her old wounds, symbols and memories come together with each new brushstroke, each carving, every seam. Memories will go up into smoke and only through the process of making she finds salvation. During her six-month residency with GlogauAIR, Huskisson has created works that strive to bridge the gap between various media . Artworks that are neither paintings or drawings, and sculptures that are neither soft or hard. Her project "Miasma" will be an accumulation of cosmic witchcraft, digital deceit, sci-fi paintings, and sewn dreams.



JOÃO MOTTA GUEDES



PORTUGAL

www.joaomottaguedes.com

João Motta Guedes lives and works in Lisbon, Portugal. His projects stem from his personal experience that led him to complete his Master's in Law in 2020, and in 2023, his Master's in Painting at the Faculty of Fine Arts of Lisbon.

His work explores concepts of freedom, vulnerability, love and violence. His artistic productions reflect on life as a metaphor for a journey where different paths emerge, allowing the discovery and sharing of experiences about the meaning of feeling and being human.

His artistic language appears in media such as installation, sculpture, photography, drawing, written words and poetry, and has predominantly a projectual and experimentalist nature.

Based on a poetic discourse and narratives, he seeks to question the way forward through oniric expressions that elevate the observer to a utopian look at society and life, resulting in a comprehensive record of symbolic and metaphorical images that enhance poetry as the answer to the formulated questions.

For his project at GlogauAIR - No feeling is final - he investigates emotional landscapes in the context of rave culture. The project inquires and expands on the dynamics and relations in situations of violence and freedom in rave environments. It is from this polarity where oppressed and oppressing forces collide, that he has developed the idea of travelling as a self-discovering journey.

Some of his upcoming shows will be in April at Galeria da Boavista (PT), and in June at GlogauAIR (DE).



LUCÍA MIR

SPAIN

[@luciamir](#)



ONLINE

Lucía Mir specialised in painting and drawing in Fine Arts at the Polytechnic University of Valencia, Spain. Her work has been exhibited both in Spain and internationally with graphic work at the collaborative transoceanic encounters in Havana, Cuba. In 2023 she had her first solo exhibition called 'La piedra de la Locura' (The stone of madness) at the Sala Campoamor, Valencia. An exhibition project made up of paintings and drawings where she was able to exalt the importance of drawing as a primordial part of the creative process and final work at the same time.

The artist is dedicated to the construction of illusory environments designed to challenge the tenuous line between fiction and reality. She designs spaces without an obvious order, allowing imagination to flow freely and blending real and fictional elements. This results in scenes that are both mysterious and ironic.

During the last three months of the residency, the artist has explored the use of various materials, such as oil, charcoal and graphite. The atmosphere and aesthetics of these works find resonances in the visual language of video games, as well as a surrealist approach. Elements such as underground holes, earth blocks and prop hills, combined with the narrative essence, immerse us in the experience of participating in an adventure. In this context, clues and hints emerge that demand to be overcome in order to reveal the underlying truth (or lie).



NATASHA KATEDRALIS



CANADA

www.natashakatedralis.com

Natasha Katedralis is a visual artist based on the unceded Squamish, Tsleil-Waututh and Musqueam territories, colonially known as Vancouver, Canada. She holds a BFA from the University of British Columbia and is a two-time shortlist nominee for the Philip B. Lind Emerging Artist Prize (2017, 2022).

Working with digital photography, material forms and often the meeting of the two, Katedralis' practice is motivated by the perceptual and formal relationships possible within and in-dialogue-with the virtual space of images. Her work extends a sensitivity to the material world through an orientation of close-looking that finds itself shifting in and out of abstraction.

Drawn to the contrary ways that photography emphasizes, dramatizes, alters, and flattens its subjects, Katedralis uses these specific characteristics of the medium as her tool kit for building compositions.

During her time at GlogauAIR, she has been expanding on her idiosyncratic approach to image-making through a process of intricate studio photography that brings hand cut forms into play with light and shadow. Experimenting with various material and tactile interventions, she has been producing UV prints of her images on PVC fabric and incorporating the historical technique of hand-colouring with oils.



NATHALIE MEI

SPAIN

www.nathaliemei.com



ONLINE

Nathalie Mei, born in Eivissa, Balearic Islands, is a conceptual artist and writer who works between Europe, the UK, and Japan.

Her artworks depict perceptual qualities of time, emotion, memory, nomadism, and territory - and their relationship to the organic world and the virtual space. Through sculpting with fragile, organic materials, image-related data, texts, and sound, the artist intertwines questions around duration and biographical traces with material samples from local territories. Her works result from long durational, cyclical production processes and explore the partitioning between emotional and intellectual processes in human understanding of complex realities.

Her works often interrelate and are, inter alia, informed by anthropology, philosophy, literature, and pop culture. The artist expands classical notions of conceptual art and the objet trouvé by introducing the relationship between emotional worlds and speculative biographies to questions around identity, copy, and original.

During her residency, Nathalie translates (found-) footage from Kamakura and Nasu, Japan to sculpture, sound, and installation. "E.A.S.T. 08" is an exploration of the layered relationship between human emotion and territory from the perspective of the visitor. The work refers to "Emotional Archive of Spaces in Time", a cluster of artworks the artist started creating in 2018.

In spring 2024 Nathalie will be joining PADA Studios in Lisbon, Portugal, as an artist in residency.



NICHOLAS FERGUSON

UNITED KINGDOM, SWITZERLAND

www.thecolourof splash.com



Nicholas Ferguson is a British-Swiss artist and storyteller who lives and works in London. He is a painter, poet and collage maker who creates art to probe his identity and what it means to be human.

Ferguson's work is an invitation to see the world with fresh eyes. His works are playful, colourful and provocative; questioning what he observes in himself, society and what he'd prefer to see. In August, 2023 he held his first solo exhibition in London, entitled "Perspective". The exhibition featured paintings which made use of abstraction and the figurative, with surreal and pop references - accompanied by poetry - to question 'western' perspectives.

Ferguson approaches his work intuitively - deciding on a theme before diving into a smorgasbord of notes, collected images, sketches, which result in poetry as well as painting. He'll often work on multiple pieces at a time.

While at GlogauAIR, Ferguson is experimenting with his expression on large scale canvases. He's working with a loose theme entitled "Hide and Seek" which looks at dreams, vulnerability and the expression of the heart. He believes the latter is an antidote to an era of rapid change, with the convergence of increased reliance on technology and automation, and the propagation of rationality over spirituality, bringing ever greater homogeneity (and mental health issues) to society.



NINA CRISWELL

LITHUANIA, UNITED STATES OF AMERICA

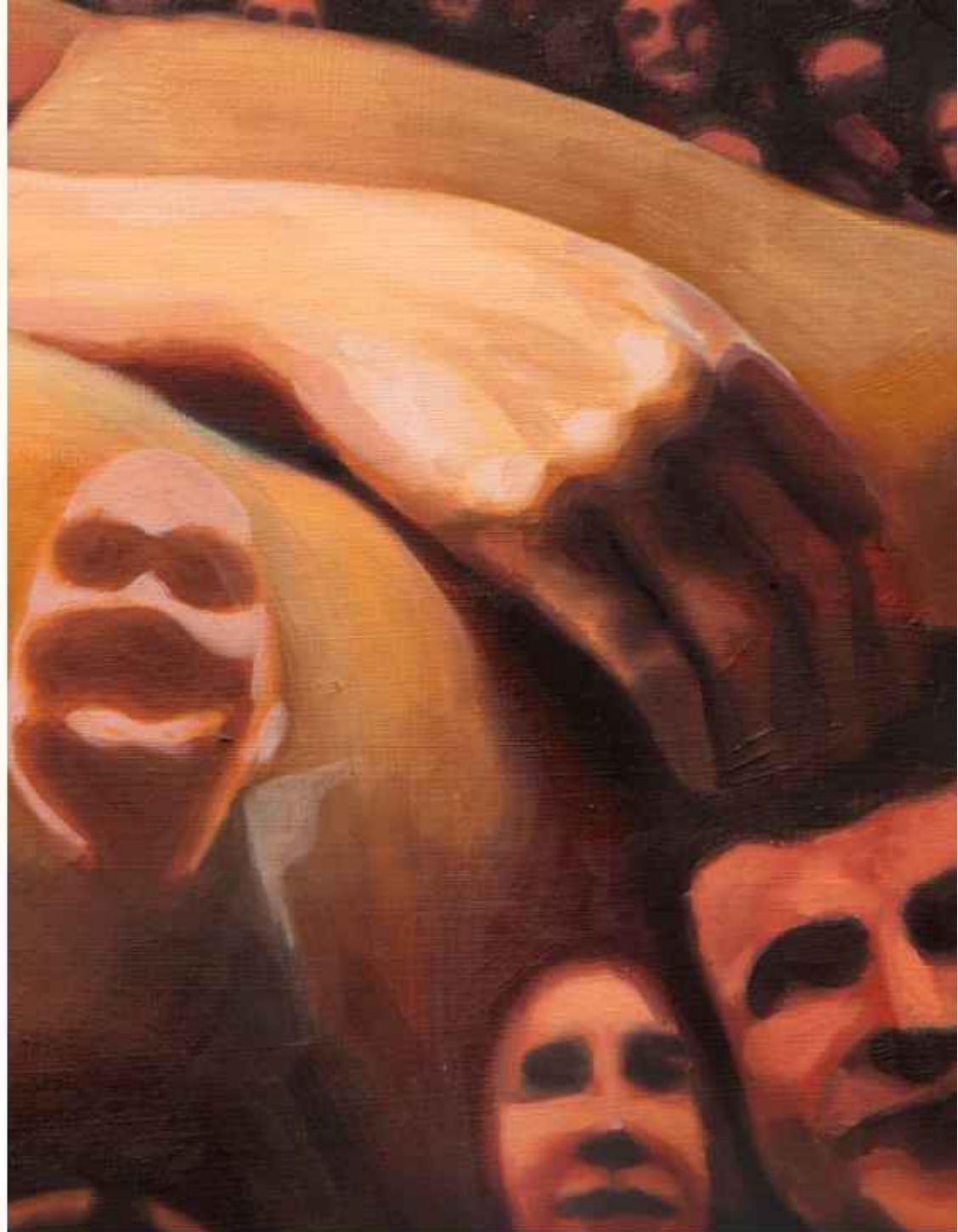
www.ninacriswell.com



Nina Criswell is a Lithuanian-American oil painter from California currently based in Berlin, with a background in architecture and computer science. In her practice, she explores the invisible forces shaping the embodied experience.

Criswell examines self-censorship of the body and the mechanisms that suppress pleasure and desire in the public space. Combining found and personal photographs, the painting process is a balancing act where Criswell lets these forms merge, unveiling the latent potential for intimacy and violence in the body on both individual and collective levels. By combining sensual bodily forms with images of crowds or the environments designed to serve them, privacy becomes a concern; what happens when we expose the intimacies of the body in public?

During her residency at GlogauAIR, Criswell has been exploring generative AI tools to reimagine medical imagery. Influenced by her upbringing with a mother who is a doctor, she holds a longstanding fascination with bodily organs, concealed and inaccessible without intrusion or violence. First training an AI model to take and reproduce photos of internal organs, she then paints them using luscious colors and fluid gestures, reinfusing clinical representations with sensations of pleasure and desire. These surreal interpretations serve as an invitation for viewers to contemplate the mysteries of our internal mechanisms and their delicate impermanence.



SHANNON CASTOR & DUAABILBEISI



UNITED STATES OF AMERICA, JORDAN

shannoncastor.wixsite.com/website | [@duaabilbeisi](https://www.instagram.com/duaabilbeisi)

Hail rode our shoulders. Western Atlantic, the wind fresh of salt, foaming chop of winter. We met. Mirrored hunch we knew each other's cold. Souls meeting before language. Art bridged the gap.

Duaa Bilbeisi and Shannon Castor forged their friendship on the sweeping Irish terrain of the Burren. Donkey peppered fields standing between micro climates enclosed them. Limestone lines, walls crawling the island. Isolation is a beautiful, unbearable thing. A fish eye vision on a raindrop, past lives blown up. It is clear that a friend causes healing.

Duaa and Shannon communicate through painting. They mine their memories and find a shared feeling. Working from a word prompt carefully chosen, they respond in color. Duaa's bold graphic shapes, Shannon's sense of drama. Figures often step into these translations.

In this unique collaboration between friends of different homelands, Duaa from Jordan, Shannon from America, these translations build a third language where words are not sufficient. Duaa and Shannon want to encourage people find their mirror. To not let any barrier of communication be an obstacle.

During their online residency with GlogauAIR, Duaa and Shannon are producing an art book. The format reads like a comparison – each artist's work is paired side by side. Viewers can interpret the interpretations of each selected word. The goal of the book is to inspire others to create freely through the special act of exchange.

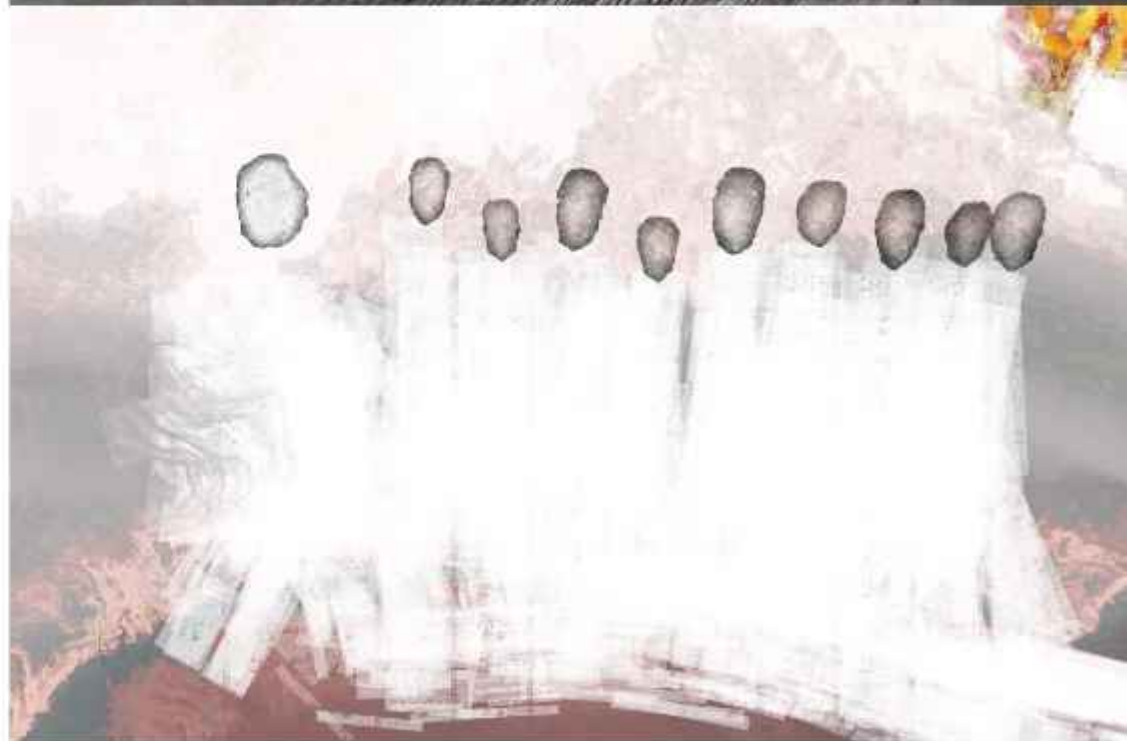


IMAGE 1: SHANNON CASTOR, SIMILARITIES (2024)
ACRYLIC PAINTING, 31X41 CM

IMAGE 2: DUAABILBEISI, SIMILARITIES (2024)
DIGITAL PAINTING

SHAYE THIEL

UNITED STATES OF AMERICA, CANADA

www.shayethiel.com



ONLINE

Shaye Thiel is an American-Canadian artist based in London with work held in private collections internationally. Based on her own recent experience with hearing loss, Thiel views sound as a participatory act via site-specific performative exchanges between participants and machine, mimicking that of her relationship with her hearing aids.

In collaboration with leading neuroscientists, her current research explores the boundaries of sound perception for individuals who are hard of hearing and use hearing aids through large-scale participatory sound installations.

Thiel's research-based art practice follows the arc of nine distinct stages/steps: curiosity, exploration, research, conversation, experiment, play, reduce, share, repeat. This approach generates a symbiotic relationship between research and creation and allows for a harmonious tension between the artist and the information.

As the artist began losing her hearing, the notion of a time capsule of memory by drawing attention to the everyday sounds has become increasingly urgent. This work encourages viewers to listen to listening (quantum listening), gain a deeper understanding of (hearing) loss and to appreciate intimate and everyday sounds such as her father's piano playing, conversations with family and friends. Her work allows the participants to navigate the space without mediation or interference from the artist, encouraging the viewer to contemplate the senses through hearing and self-guided movement while highlighting the fragility of sounds.



STELLA WIEMANN

GERMANY

[@stella_loona](#)

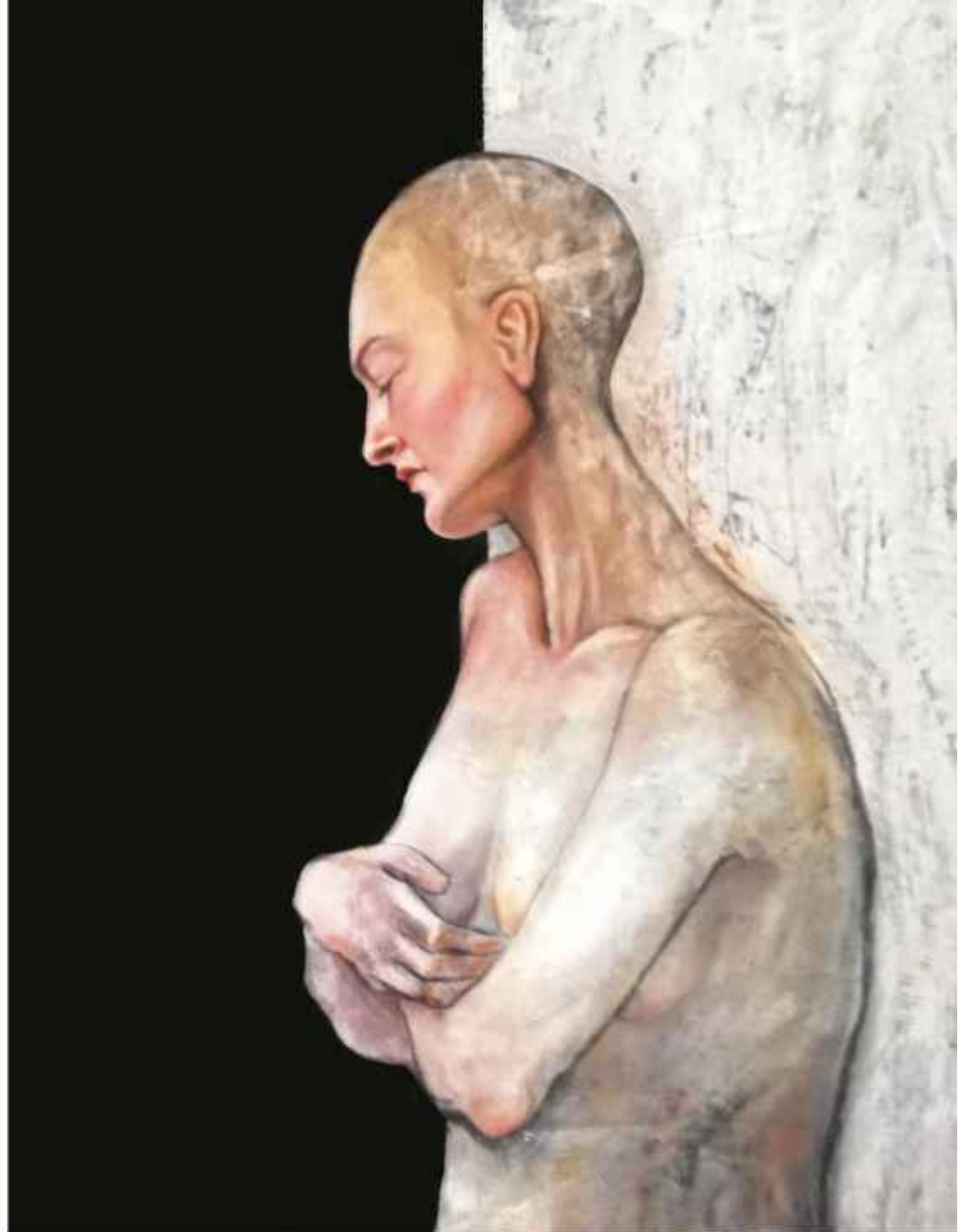


STUDIO 21

Stella Wiemann is a multidisciplinary artist working in both performative and visual arts. After completing her acting studies and working in various theaters in German-speaking countries, Wiemann has endeavored to make her work accessible to a broader audience, beyond national borders and language barriers. In her research, she seeks universal human expressions that can be understood by everyone, regardless of differences. This has led her to experiment with dance, physical theatre, as well as painting.

During her residency at GlogauAIR, Wiemann focuses on the experience of loneliness within the LGBTQIA+ community, using oil painting as her medium of choice. Her research delves into the complexities of loneliness in the journey of self-discovery and coming out, particularly at night, addressing challenges such as feelings of shame, fear, and rejection. Wiemann interviewed members of the queer community and based on the narratives from the interviews, she first created sketches before ultimately painting with oil.

Regardless of sexual orientation, gender, or identity, these are universal feelings that connect all of us. Through this shared experience, we can recognize ourselves in each other, and all separation and devaluation can disappear.



TIFFANY ADLER

UNITED STATES OF AMERICA

www.tiffany-adler.com



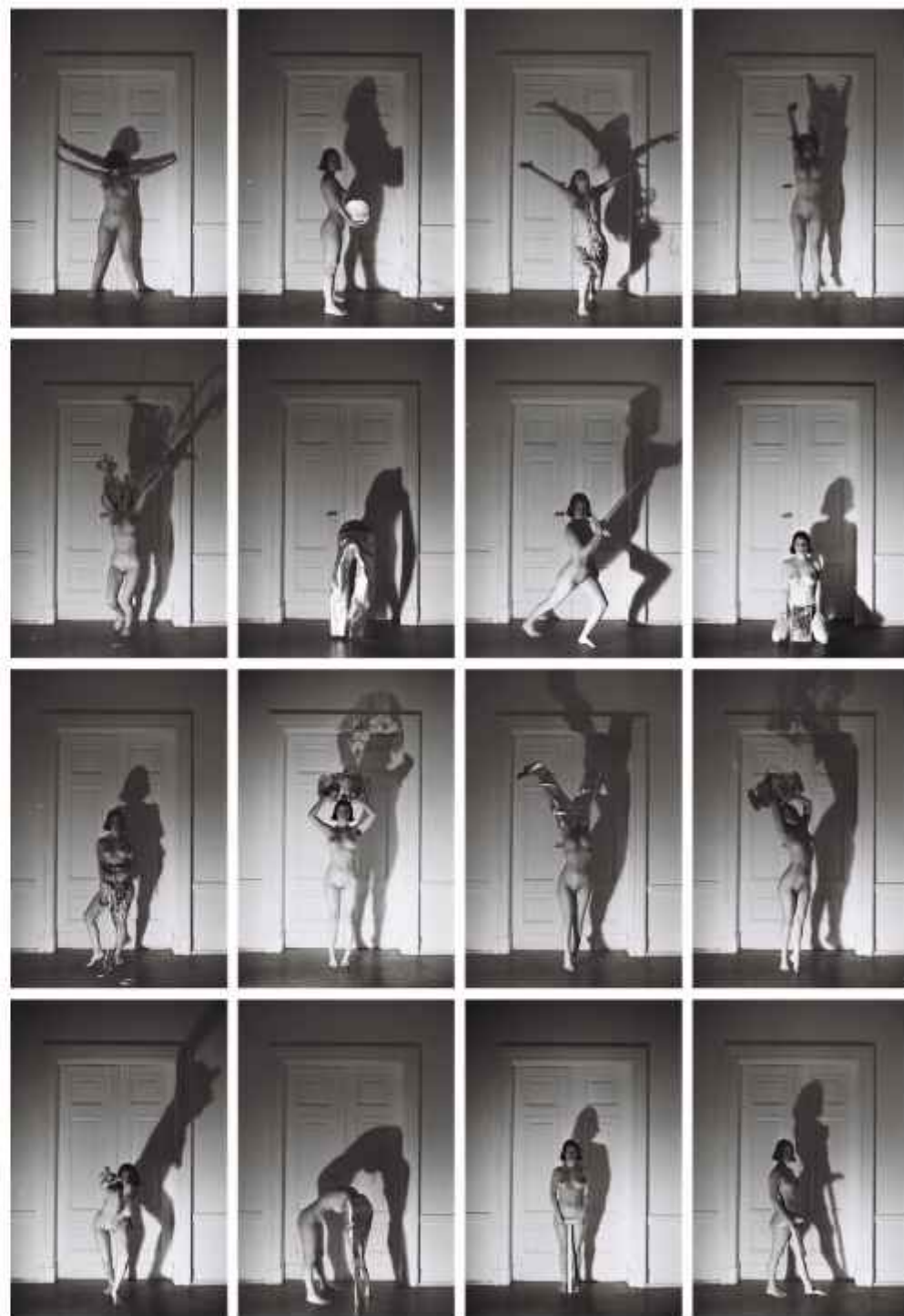
STUDIO 23

Tiffany Adler is an American artist based in Los Angeles, California. Adler is trained in art and architecture. After graduating with her Masters in Architecture in 2017, she practised at several firms, simultaneously developing her artistic practice. Adler decided to leave the profession of architecture in 2023 to focus on her career as a visual artist.

Adler's background in art and architecture informs and deviates from the processes upon which her sculptures and contemporary narratives are derived from. Her interests lie both in the process of sculpture as well as the conceptualization, fabrication, and construction of a scene, in service of communicating alternative narratives within classical frameworks of representation and architectural forms. In a woven effort, she explores and portrays evolving cultural ideas about feminism and human connection.

Her experiences as a female identifying person informs her work symbolically through material manipulation, misbehaving formations of the body, and satirical narratives within the medium of film and photography. She uses her own body as part of the narrative, and as a vehicle for communicating such ideas.

While practising in Berlin, Adler has allowed contradictions to seep into her work. The darkness and the playfulness of Berlin become qualities of interest. After completing a photo series that juxtaposes the Vitruvian Man with a Vitruvian Woman, she is now exploring how the series manifests into sculpture.



VITRUVIAN WOMAN (2024)
35MM FILM PHOTOGRAPHY

WORKING HARD

TAIWAN

artworkinghard.wixsite.com/portfolio



STUDIO 14

The Taiwanese artistic duo, Working Hard has been the brainchild of the creative duo Wen-Ying SHE and Po-Yu KUO (She and Boy) since 2015. They work at the intersection of audio, sculpture, and installation. For them, Working Hard is more than just the name of their art collective but a method of aesthetic practice to reconstruct an imaginative space via archival approaches.

The project 'A Better Tomorrow' examines the unseen immigrant's social landscape beyond the grand narrative. It consists of Working Hard's field research, sound recordings, and workshop with a group of Indonesian fishermen in Taiwan. For Open Studios, the artists reproduce a part of the structure called 'Pos Kampoa', using the construction techniques they learned from the fishermen. 'Pos Kampoa' is a gathering space in the neighboring fishing port in Taiwan and occupied this space for more than a decade. They made Pos Kampoa their 'home' when their ships docked at the port after days, weeks, and months on the sea.

Working Hard is interested in using art as a conjunction for creating conversations and shared experiences—to meet, talk, and learn from people about their histories. They emphasize 'conversations' and 'experiences' with people who have been subject to forms of discrimination and injustice. This shared communal effort of storytelling, documentation, and creation for envisioning and further pursuing a better tomorrow is what brings their work and life together.



YULIA ANI

GERMANY

www.yulia-ani.com



ONLINE

Yulia Ani, born in the remote expanse of Kamchatka, Russia, has lived a life enriched by diverse cultures, having spent significant periods in the US and France, and is currently located in Berlin, Germany. With an academic background that includes a Bachelor's degree in Advertising from the Moscow University of Humanity and an art degree from SKBG Collage in Berlin, Yulia has carved a niche for herself in the art world.

In her artistic practice, Yulia delves into the realms of identity, belonging, and the complexities of human emotions. As an immigrant, a woman, a mother, she embodies these facets into her work, exploring the dualities of inner and outer structures and the states of mental health.

Yulia's painting process is both intuitive and intentional. Her works are more than a visual feast, they serve as a mirror, reflecting the viewer's own experiences and emotions, thereby fostering a deeper understanding of the self and the world.

During her virtual residency at GlogauAir, Yulia developed her project "The Moment When." Through this collection of artwork, she delves into her personal journey, addressing the emotional turmoil that contributed to her eating disorder and her exploration of spiritual fulfilment. Contrasting with the calm and reflective nature of classic Dutch still-life art, "The Moment When" presents a lively, intense, and emotional portrayal of life's upheavals.



PROJECT SPACE



BERLIN GUEST PRIZE: MIRIAM POLETTI (IT)

Awarded by Memoria Artística Chema Alvargonzalez



MIRIAM POLETTI

ITALY

www.miriampoletti.com



Miriam Poletti is a Berlin based artist working with photography, textile sculpture, video and creative writing. Their work explores notions of tenderness, fragility, and the symbiotic threads that bind us together, both individually and collectively. The work process itself serves as a methodology to create new models of social interaction: through collaborations and workshops, the artworks are the result of a collective effort. The artist questions the idea of authorship of the work, encouraging a sense of shared ownership.

Poletti's main subject is the body, investigated in its slightest alterations. They explore its soft, weak, porous nature, easily moulded or even bruised by the proximity of others. The public is invited to interact physically and viscerally with the works, squeezing or gently touching them, leaving their own temporary imprint on them, consuming them, wearing them, making them their own. The skin becomes a site of possibility where the nature of the encounter is established through the performative process of touching.

Poletti's work has been exhibited in galleries and cultural spaces nationally and internationally such as Myymälä2 (Helsinki), Kogo Gallery (Estonia), SomoS (Berlin) Careof (Milan), MO.CO. La Panacée (Montpellier), ACMI Australian Centre for the Moving Image (Melbourne). Their poems and fictional works have been published in collaboration with the independent publishing houses Freigeist Verlag, SOFT EIS Presse and SHIFT BOOKS.



CATALOGUE'S COVER

CHOSEN ARTIST: JACQUELINE HUSKISSON

Every three months, GlogauAIR releases a new catalogue, collecting the work and projects of the artists in residence. The catalogue in your hands not only showcases this term's creations but also constitutes a reflection of this past term's experiences.

Our first catalogue edition was released in 2006, and it has changed a lot since then. Since 2021, the catalogue cover is now decided by an open call to all of the participating artists. Making this publication a canvas in which our artists in residence can intervene results in a more personal publication for every residency term. Participating in the cover of the catalogue also allows the artists to translate their work into a different medium.

After carefully reviewing the proposals for this session, the jury selected the image submitted by Jacqueline Huskisson, an interdisciplinary artist from Canada, who joined us in the residency in October, 2023. Huskisson employs a number of different media to convey her message, be it painting, printmaking, sculpture, or more recently quilting.

The image selected for the cover, 'Reach', ultimately captures something about the experience of the residency and the production of art itself. 'Reach' is a detail of a larger painting, which incorporates a relief print onto an acrylic on canvas painting. She describes her current project Miasma as "an accumulation of cosmic witchcraft, digital deceit sci-fi paintings, and sewn dreams." The artistic freedom artists encounter, while participating in a residency, is evidenced in this project and the artwork Huskisson has completed.

Huskisson's current research and artistic production is a culmination of her six-month residency with a series of paintings incorporating her

prints, works on paper, and her latest foray into sewing; quilted sculptural creatures who bring to life the characters in her paintings.

GlogauAIR residency is a place for artists to fully concentrate on their artwork; exploring, experimenting and exhibiting. During Huskisson's six-month residency, which was generously supported by grants from The Calgary Arts Development and The Canada Council for the Arts, she was able to explore her themes and research freely during two presentations in our showcase window, culminating in our open studios event with all of the resident artists.



Jacqueline Huskisson *'Reach', Relief and acrylic on panel (2022)

OFFICIAL CONTRIBUTORS:

Memoria Artística Chema Alvargonzalez



INSTITUTIONAL PARTNERS:

Embassy of Spain in Berlin



COLLABORATORS:

Julia Stöschek Foundation

PinguinDruck.de



MEDIA PARTNERS:

Artconnect



THANKS TO:

Preussen Quelle



MEMORIA ARTÍSTICA CHEMA ALVARGONZALEZ

FOUNDERS

Columna Alvargonzález Ramos
Pablo Alvargonzález Ramos

HONORARY PRESIDENT

M^a Pilar Ramos Angueira

STUDIO MANAGER

Mariona Benaiges Pecanins

STUDIO ASSISTANT

Constança Pons Rigo

+34 (93) 415 12 93
C/Martínez de la Rosa, 48 Bajos
Barcelona 08012, Spain
www.chemaalvargonzalez.com

GLOGAUAIR GMBH

FOUNDERS

Chema Alvargonzalez
Pablo Alvargonzález Ramos

DIRECTOR

Columna Alvargonzález

PROGRAM COORDINATOR

Mariona Benaiges Pecanins, MA

ADMINISTRATION AND BUILDING MANAGER

Liselotte Dossenbach

ON-SITE PROGRAM: CURATOR AND PROJECT SPACE COORDINATOR

Dr. Suzy Royal

CURATOR ADVISOR AND PARTNERSHIPS

Justin Ross, MR

ON-LINE PROGRAM: MANAGER CURATOR

Laura Olea López, MA

GRAPHIC, MEDIA & VISUAL COMMUNICATION

Beatrice Lezzi

ONLINE PROGRAM: COMMUNITY MANAGER

Sofia Bevione

TECHNICAL SUPPORT

Sergei Kurek, Tiberiu Bleocan

INTERNSHIP PROGRAM

Marte Conesa, Raquel Gonzalez

+ 49 (0) 30 61 222 75
Glogauer Str. 16
10999 Berlin, Germany
www.glogauair.net

