

Elisa Garcia de la Huerta
www.elisaghs.com
IG @auzit

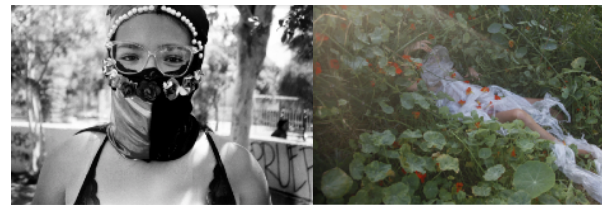
1. Inhale/Exhale 2020

Selection of 9 pairs of 35mm analog photographs

Detail credits of images:



Inside, Pauli Cakes, Brooklyn 2016.
Womb, collaboration with Martin Garcia de la Huerta,
Chile, 2020.



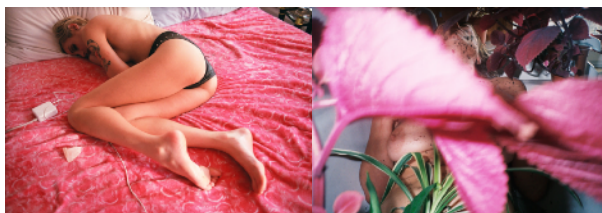
Guerrera, Marcha de la Mujer, Chile, 2020.
Espuelas, collaboration with Martin Garcia de la Huerta,
Chile, 2020.



Sailor Bday, Madelena Mak, Brooklyn, 2016.
Hang Ferns, collaboration with Martin Garcia de la
Huerta, Chile, 2020.



Octopus nipples, collaboration with Melanie Bonajo,
Berlin, 2019.
Cochayuyo, Oceanic Textures, Chile, 2020.



Caroline Mills, Pink Bed, Bushwick, 2016.
Hot Pink Botanica, collaboration with Melanie Bonajo,
Berlin, 2019.



Rabbit cuddle, with Daniela Pizarro, 2020.
Merge, collaboration with Marie Tomanova, Queen
Forest, 2016.



Feather, Melissa Vento, Bushwick, 2016.
Bloom, Magnolia Geometries, Barcelona, 2017.



Silhouette and fan, collaboration with Daniela Pizarro,
Chile, 2020.
Corporeal Rocks, Chile, 2020.



Oceanic, Yoni Archeology, Chile, 2020.
Tableau and Thorns, collaboration with Daniela Pizarro,
2020.

2. Oceanic 2020

15 min soundscape

Field recordings, vocal processor and synth.

The work explores how the exponential advancing technology has massively impacted our capacity to relate to nature and erode our ability to stand present, relate with each other, our environment and bodies.

With the current pandemic, this has been vividly amplified and inherent in a hyperreal quality.

Elisa uses analog photography as a form of resistance and resilience. For Virtual Open Studios at GlogauAIR she matched pairs of images from different origins, as a metaphor of our current emotional entanglement and psychic shift which can be perceived by the senses as the primal act of inhale/exhale; confinement and isolation versus expansion and connection.

The soundscape is a hybrid composition made from collaging nature field recordings, minimal vocals and gestural actions she had clandestinely recollected over the confinement during the residency period, with the aim to soften and transport the audience to some of that innate timeless sensibility and support the images with the potential to expand our sense of inner/outer nature through the screen.